

***Card & Payment Solutions  
for Local Authorities  
...in safe hands***

**Citizens Cash Cards**

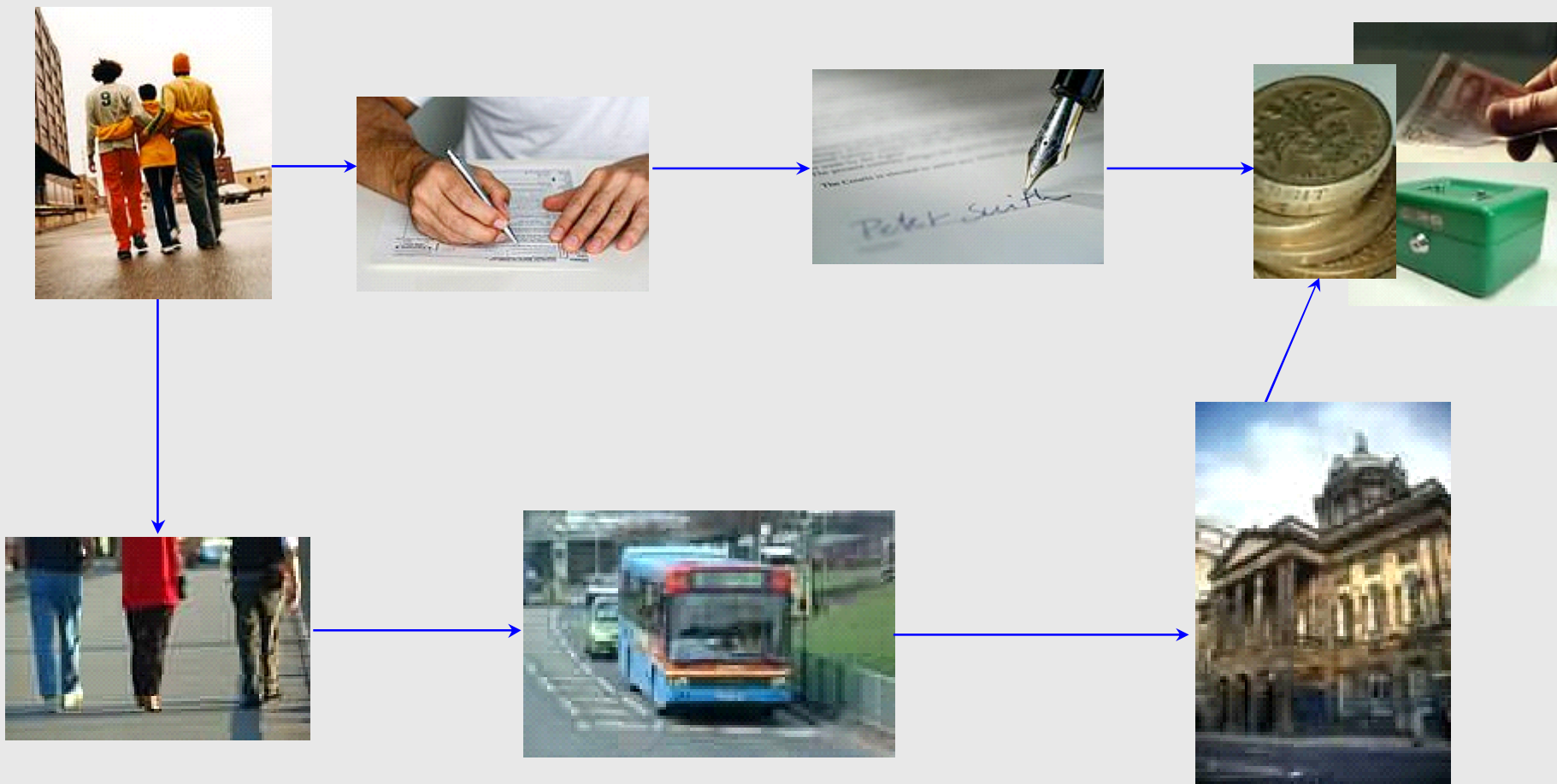
*Charles Bennett – Avantra*



**avantra**

# How do your citizens access their cash entitlements?

avantra



Liverpool City Council have found a far more convenient way .....

avantra



The 365 Card from Avantara .....



# The 365 Cash Card from Avantra, A citizens card for everyday spending needs

avantra



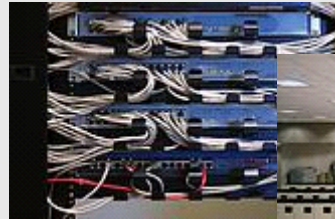
# How are Liverpool planning to leverage the opportunity?

avantra

- Independent Living Fund
- Setting up home grants
- Ward of Court (APAR)
- Rent payments
- Emergency Cash Payments
- Educational Awards
- Claims for direct work with children
- Leaving Care Payments
- Domiciliary Care Reimbursements
- Non-approved Foster Care Payments
- Revenue & Benefits/Housing
- Charity Payments
- Seasonal Workers
- Petty Cash Claims
- Car Parking
- Birth Certificates
- One-off payments
- Contact Money
- Mileage Claims
- Misc. Cheque payments



# How are Liverpool proposing to help other Local Authorities adopt the 365 Card?



- Local e-Government excellence:  
Efficiency .....  
..... winner Liverpool City Council  
([www.e-governmentawards.co.uk](http://www.e-governmentawards.co.uk))



- Efficiency & Modernisation award  
sponsored by Fujitsu Services .....  
..... winner Liverpool City Council  
([www.lgcnet.com](http://www.lgcnet.com))



# The 365 Cash Card Solution is Supplied by .....

avantra

## Main Supplier

- LINK Interchange Network Limited – part of the UK Critical National Infrastructure
  - Owned by 22 UK FI's, including all major UK banks
  - Process over 2.4bn ATM transactions annually
  - Trading as Avantra – outsourced services division of LINK



avantra

## Sub-contractors

- PrePay Technologies Limited - FSA regulated, full eMoney license holder
  - Over 5 years experience in the UK prepaid market place
  - Issuers of MasterCard scheme services
  - Live prepaid products on the market
    - Comet, Debenhams, Laura Ashley, Arcadia, Western Union
  - Strong backing (GE Capital amongst others)
- Post Office lined up to deliver coinage cash withdrawals



Questions

avantra

